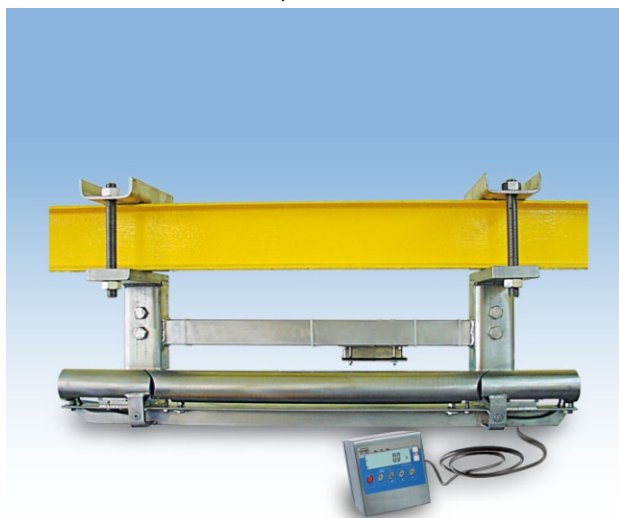


OVERHEAD TRACK SCALES



Designed for weighing loads which move on tracks of scales. Scale can cooperate with device for evaluating meat content. LCD backlit indicator installed on a wire.



Counting pieces

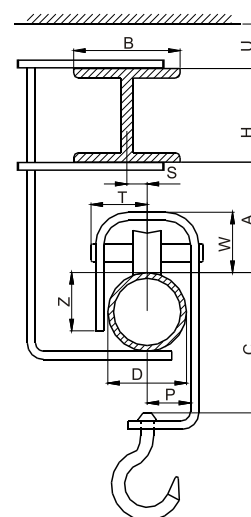
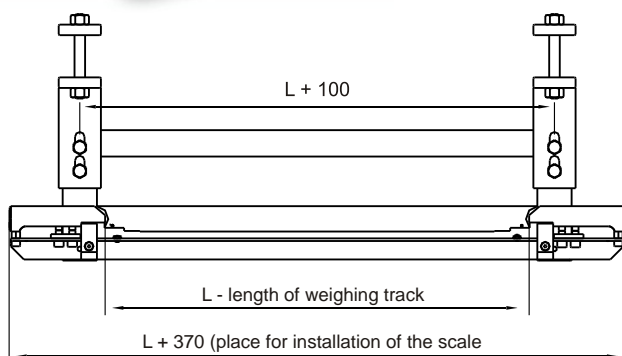
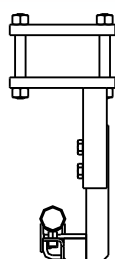


Checkweighing



Summing function

Overhead scales are manufactured either in galvanized and in stainless steel version, as dual range weighing instruments. They are equipped with stainless steel backlit LCD measuring indicator PUE C/31H.



CAUTION!

- weighing track in place of installation of the scale must be positioned horizontally with maximal tolerance +/- 10 mm
- z dimension can be omitted of: $Z \leq 80\% D$

Technical data:

	WPT/2K 300/600	WPT/2K 300/600H
Max capacity	300/600 kg	300/600 kg
Readability	0,1/0,2 kg	0,1/0,2 kg
Tare range	-600 kg	-600 kg
Scale construction	galvanized	stainless steel
Track length		max. 800 mm
Working temperature		-10° - +40 °C
Output signal		RS 232
Power supply	230V / 11V AC or 120V / 11V AC and internal accumulator	
Display	LCD (backlit)	

Additional equipment:

RACK FOR HEAD	NEEDLE PRINTER "EPSON"
LCD DISPLAY	COMPUTER SOFTWARE: PW-WIN 2005
LARGE SIZE LCD DISPLAY	COMPUTER SOFTWARE: RAD-KEY 2000
"KAFKA" THERMAL PRINTER	RS 232/RS 485 CONVERTER